

Rowe Referrals

The Veterinary Hospital

Bradley House, Ferndene

Bristol, BS32 9DT

Telephone 01454 521000

Fax 01454 521001

referrals@rowevetgroup.com

www.rowereferrals.co.uk

The Eye Clinic

eyeclinic@rowevetgroup.com

eyes@rowevetgroup.com

Rowe

Referrals

Progressive retinal atrophy



 Find us on
Facebook

www.facebook.com/roweeyeclinic

www.facebook.com/roweveterinaryreferrals



Progressive retinal atrophy

What is progressive retinal atrophy?

Progressive retinal atrophy ("PRA") is the term we use for several genetic diseases affecting the retina (the thin layer of nerve cells at the back of the eye which convert light into electrical signals). It causes a gradual loss of specialised cells in the retina, ultimately resulting in irreversible blindness.

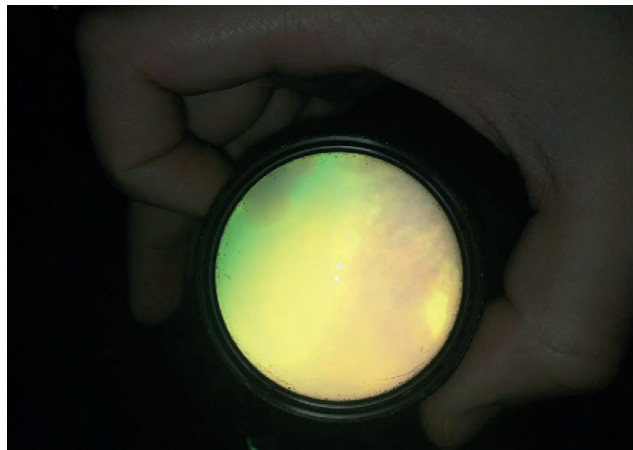


Why does it occur?

PRA is considered a genetic disease.

Can both eyes be affected?

Yes, one of the hallmarks of PRA is bilateral symmetric involvement.



Are any breeds predisposed?

Yes, any breed can be affected (since the genetics are still unknown in some breeds), however we commonly see progressive retinal atrophy in: Australian Cattle Dogs, Dachshunds, Glen of Imaal Terriers, Gordon Setters, Irish Setters, Irish Wolfhounds, Lhasa Apsos, Miniature Schnauzers, Norwegian Elkhounds, Poodles, Retrievers, Spaniels, Tibetan Terriers, and Welsh Corgis.

What treatment options do I have?

Although researchers are looking into gene therapy for PRA, unfortunately there is no successful treatment for this disease at the moment.

Is this a painful disease?

Fortunately PRA is not a painful disease. However, we advise long term follow-up examinations, as long term complications such as lens opacities (cataracts), displacement of the lenses (lens luxation), and increased pressure in the eye (glaucoma) can occur.

If you have any further questions regarding this or any other condition feel free to contact us.